

### Performance

|                                       |              |
|---------------------------------------|--------------|
| Rated Capacity                        | 4000 kg      |
| Maximum Lift Height                   | 17.1 m       |
| Load at Max Height                    | 2500 kg      |
| Load at max. reach (stabilisers down) | 500 kg       |
| Frame Leveling                        | 10°          |
| Lift Speed (boom retracted)           |              |
| Up                                    | 20.9 sec     |
| Down                                  | 16.6 sec     |
| Boom Speed (extended/retracted)       |              |
| Extended                              | 24.3 sec     |
| Retracted                             | 18.5 sec     |
| Top Travel Speed                      | 20.0 km/h    |
| Max. crowd                            | 3.7 sec      |
| Max. dump                             | 3.5 sec      |
| Engine                                | 55kW 3 speed |
| Break out force                       | 72 kN        |
| Outside Turning Radius (over tyres)   | 3.92 m       |
| Operating Weight                      | 11500 kg     |

### Standard Specifications

#### Engine

|                             |                  |
|-----------------------------|------------------|
| Make and Model              | Deutz TCD 3.6 L4 |
| No. of Cylinders            | 4                |
| Displacement                | 3.6 L            |
| Standard engine gross power | 55.4kW           |
| Maximum torque at 1300 RPM  | 390Nm            |
| Fuel Tank Capacity          | 150 L            |

#### Transmission

- 3 speed forward and reverse Power shift (1st: 5 km/h, 2nd: 10 km/h, 3rd: 20 km/h)

#### Axles

- Trunnion mounted planetary steer axles
- Integral steer cylinder
- High bias limited slip differential on front axle

#### Brakes

- Service brakes inboard wet disc brakes on front and rear axle
- Service brakes servo assisted
- Hydraulic parking brake

#### Tyres

- Standard Mitas 14.00-24 TG02
- Optional Goodyear 14.00-24 SGG  
Michelin 14.00-24

#### Cab

- EROPS and FOPS fully glazed all weather cab
- 2 way adjustable mechanical suspension seat

#### Steering 4-Wheel

- Power steering with steering wheel spinner
- Two wheel/four wheel/crab steer with push button select facility

#### Instruments

- Maintenance indicator
- Fuel gauge
- Hourmeter
- Engine oil pressure gauge
- Water temperature gauge
- Right-hand tilt and sway lever
- Boom lift and crowd on single joystick

#### Hydraulic System-Implement

Capacity 100 L

- Pump type: Gear pump
- Maximum gear pump flow 100 L/min
- Auxiliary hydraulic flow - intermittent 100 L/min

### Accessories & Options

- Air conditioning (optional)
- Stabilisers
- Road lights
- Load stability indicator (LSI)
- Brick guards (optional)
- Frame leveling
- Work lights (cab only)
- Rotating Beacon (optional)
- Rear retrieval hitch (optional)

### Attachments

#### Standard:

|                       |                            |
|-----------------------|----------------------------|
| Standard carriage     | 4000 kg                    |
| Standard coupler      | Mechanical coupler         |
| Pallet fork (4000 kg) | 1200 mm x 60 mm x 100 mm   |
| Digging Bucket        | 2.45 m, 0.8 m <sup>3</sup> |

#### Optional:

|                       |                              |
|-----------------------|------------------------------|
| Couplers              | Manual couplers JCB, Manitou |
| 4-1 Bucket            | 2.4 m, 1.0 m <sup>3</sup>    |
| Light Material Bucket | 2.45 m, 1.8 m <sup>3</sup>   |
| Lifting Hook          | 4000 kg                      |
| Truss Boom            | 3.4 m, 1000 kg               |

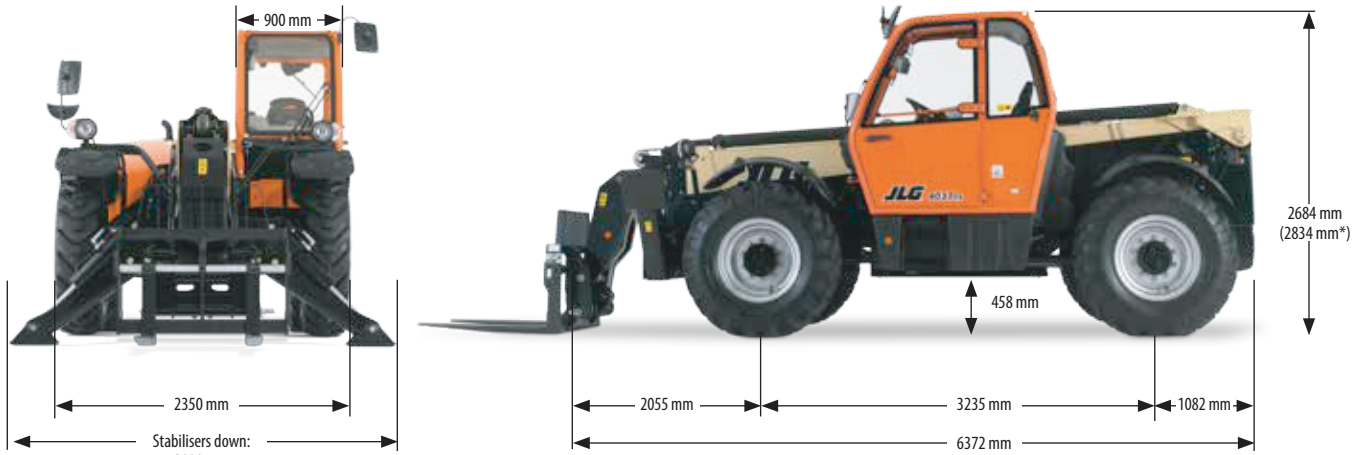
### Devon

Richmond Walk, Plymouth, Devon, PL1 4LT  
01752 500848  
info@ltpoweredaccess.co.uk

### Cornwall

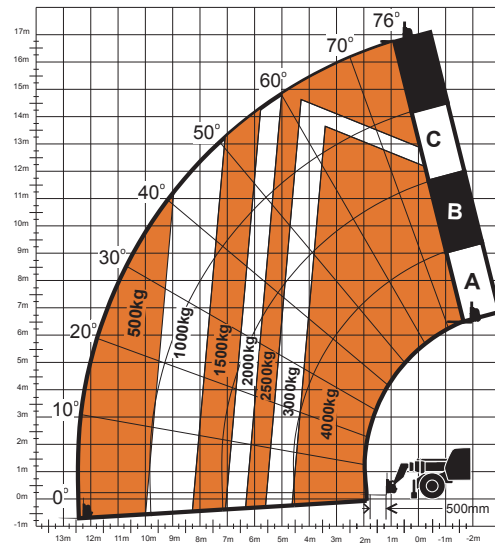
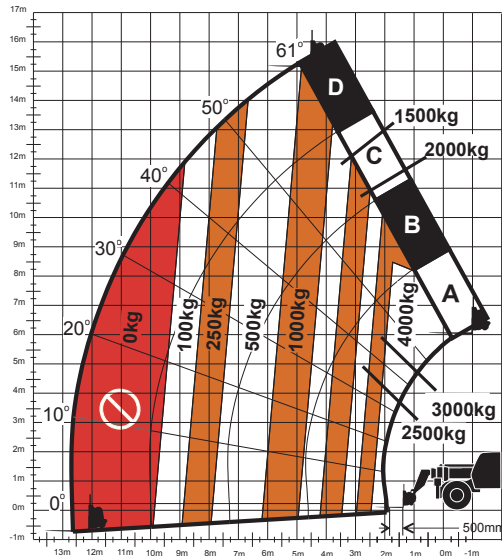
Plot 1, Phase 1, United Downs, Industrial Park,  
Redruth, Cornwall, TR16 5HY  
01209 822216  
info@ltpoweredaccess.co.uk

### Dimensions



\* High cab - Germany only.

### Load Chart and Dimensions



#### Devon

Richmond Walk, Plymouth, Devon, PL1 4LT  
01752 500848  
info@ltpoweredaccess.co.uk

#### Cornwall

Plot 1, Phase 1, United Downs, Industrial Park,  
Redruth, Cornwall, TR16 5HY  
01209 822216  
info@ltpoweredaccess.co.uk