

**Platform Height**                    **19.3m**  
**Horizontal Outreach**           **12.8m**

<b>Up and Over Height</b>	7.3m
<b>Platform Size</b>	1.5m x 0.7m
<b>Platform Capacity</b>	225kg
<b>Machine Width</b>	2.05m
<b>Stowed Height</b>	2.25m
<b>Stowed Length</b>	6.15m
<b>Gross Vehicle Weight</b>	3,950kg
<b>Fuel</b>	Diesel

### Alternative Machines

X19  
600AJ  
HR21

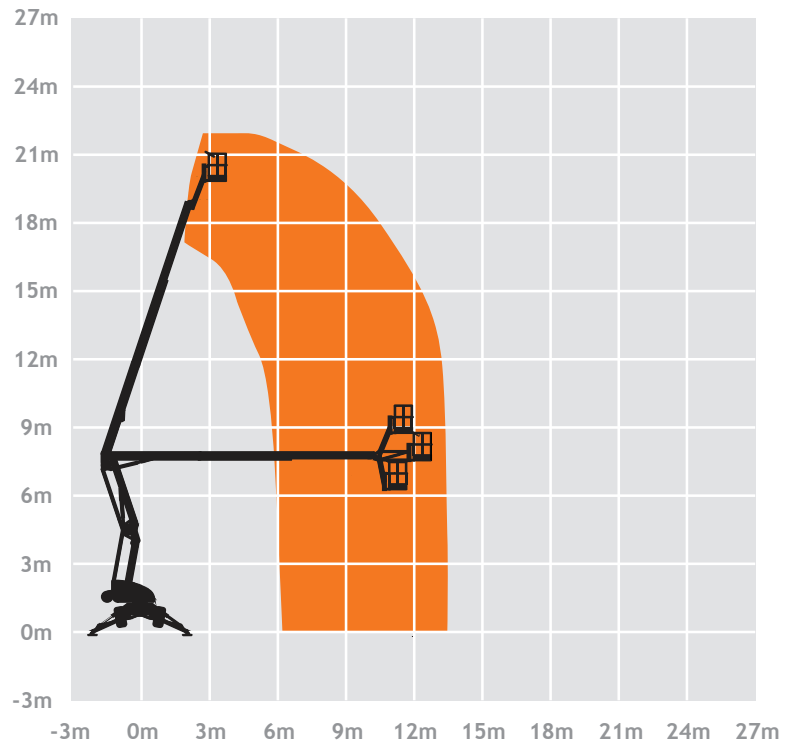
### Optional Extras

SiOPS

Please note that all technical information referred to in this document is intended for guidance purposes only and does not act as a replacement for the manufacturer's user guides which should be referred to prior to placing your order.

LTC Powered Access can take no responsibility in the event that this document contains any errors or data that is different from that in the manufacturer's user guides.

### Working Envelope



### Devon

Richmond Walk, Plymouth, Devon, PL1 4LT  
01752 500848  
info@ltpoweredaccess.co.uk

### Cornwall

Plot 1, Phase 1, United Downs, Industrial Park,  
Redruth, Cornwall, TR16 5HY  
01209 822216  
info@ltpoweredaccess.co.uk