

Platform Height **18.29m**
Horizontal Outreach **13.23m**

Platform Size	0.76m x 1.83m
Platform Capacity	230kg
Machine Width	2.44m
Tail Swing	1.22m
Stowed Height	2.57m
Stowed Length	9.91m
Gross Vehicle Weight	6,990kg
Fuel	Diesel

Alternative Machines

HR21

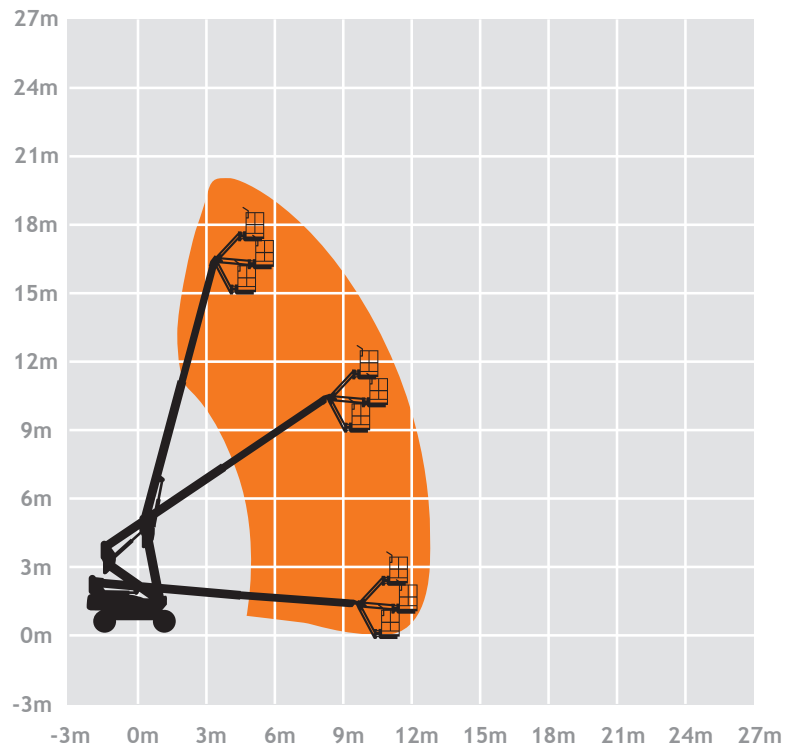
Optional Extras

- Skyguard
- Sanctuary Zone

Please note that all technical information referred to in this document is intended for guidance purposes only and does not act as a replacement for the manufacturer's user guides which should be referred to prior to placing your order.

LTC Powered Access can take no responsibility in the event that this document contains any errors or data that is different from that in the manufacturer's user guides.

Working Envelope



Devon

Richmond Walk, Plymouth, Devon, PL1 4LT
01752 500848
info@ltpoweredaccess.co.uk

Cornwall

Plot 1, Phase 1, United Downs, Industrial Park,
Redruth, Cornwall, TR16 5HY
01209 822216
info@ltpoweredaccess.co.uk